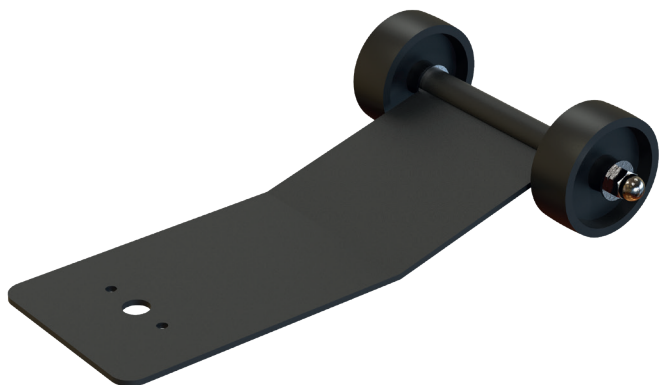




Ruedines



D/SF/RUE



Características Generales

| | | |
|---|---------------------|----------------|
|  | Peso: | 0,65 kg |
|  | Capacidad de carga: | 120 kg |

Características Técnicas

-  Ruedas de Poliamida
-  Resistente a impactos



Ruedines

Esc. 1:5 (Peso: 0,65kg)